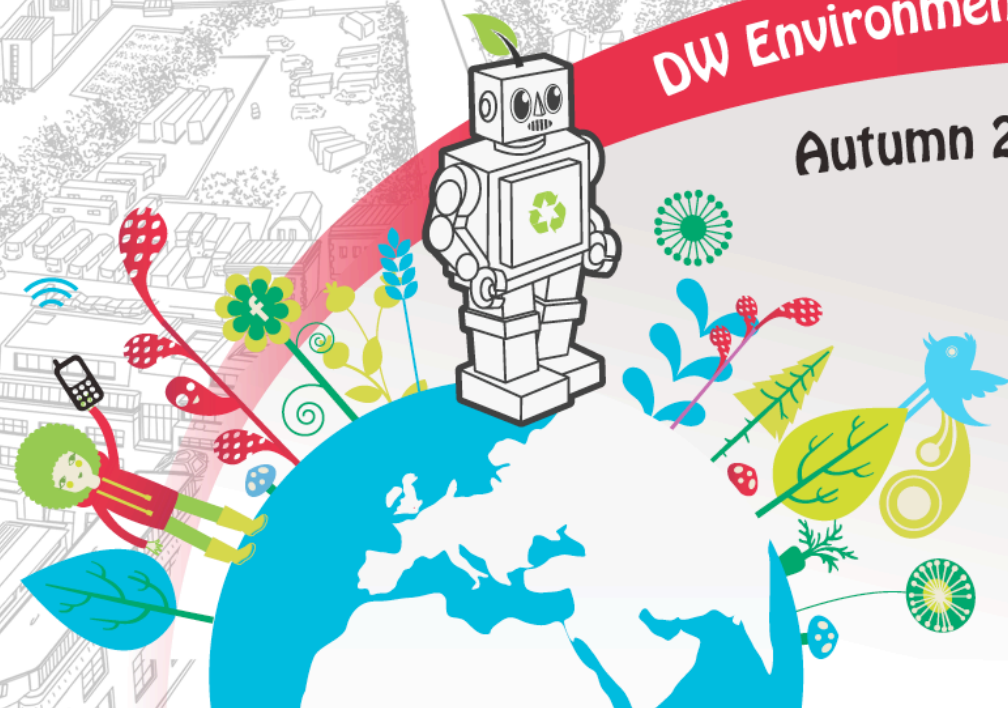




DW Environmental Policy

Autumn 2011



Sustainability Policy

At Digital White we believe in delivering outstanding service quality without compromising the ability of the future generations to meet their needs. Therefore, we are fully committed to the principles of environmental, social and economical sustainability. We want each of our projects to have maximum commercial impact, maintaining a positive social influence whilst minimising any detrimental impact on the environment.

The aim of our sustainability policy is to set specific sustainability goals as well as provide comprehensive guidelines for the achievement and evaluation of these goals. The policy is addressed to our staff, partners and clients and explicitly communicates our commitment to social, environmental and economical sustainability.

An Annual Action Plan has been developed, defining measures to be taken to reduce the Digital White carbon footprint. As we improve our sustainability credentials, the Sustainability Policy will be regularly reviewed.

Project requirement and proposed solution

At Digital White we are committed to reducing our carbon footprint through carefully monitoring our energy usage, our wastage, and constantly improving our energy efficiency. Energy efficiency is one of the main criteria considered when choosing new equipment or processes at Digital White. Moreover, we want to make sure that the electricity powering our business comes from green sources, and therefore, we aim to promote our efforts and transfer to a renewable energy supplier once the option becomes available.

Waste

At Digital White we believe in the principle “Refuse, Reduce, Reuse, Recycle” and are determined to reduce the negative environmental impact resulting from the waste generation. We actively promote initiatives aimed at reduction of waste, such as a sustainable printing policy, and encourage recycling of all recyclable materials on our premises. When disposing hazardous waste such as used batteries, we ensure that it is done in the least environmentally harmful way. Where appropriate, we donate our old office equipment to a charity.

Transportation

We aim at reducing carbon emissions from business and staff travel through actively encouraging our staff to use low-carbon transport means such as public transport, cycling or walking. The same applies to partners and clients where appropriate. Digital White team members are encouraged to cycle to work and the company has joined the government Cycle to Work scheme.

A detailed business travel log is maintained in order to ensure an accurate business travel carbon footprint calculation and to monitor the progress of the carbon emission reduction initiatives.

Water

We encourage our staff to use water efficiently and are looking for more sustainable ways of water consumption, from drinking water to washing hands.

Staff Wellbeing & Office Environment

At Digital White we believe that our main strength is in the exceptional creativity and expertise of our employees. We have a responsibility towards their health and general well-being, and therefore seek to create an inclusive, comfortable and safe working environment. We promote healthy working conditions, encourage our staff to take proper lunch breaks, not work too late, exercise, and generally try to create positive and enjoyable working conditions.

Social Responsibility and Business Decision Making

We are aware of the influence Digital White has on society and the environment, and we aim to achieve financial success without compromising our sustainable and ethical values. Therefore, we are constantly reviewing the decisions and choices we make as a company and as individuals. In the development of Digital White as a successful business we aim to provide business solutions that will have positive social and environmental impacts.

Current clients - We encourage our current clients where appropriate, to review their needs and choice of the products and services taking into consideration environmental, social and economical criteria.

New clients - Our preference is to work with those companies who share our values and ethics. Therefore we will review these in the process of Client and Project Scoping.

Procurement

We want to ensure that our supply chain reflects Digital White's sustainability objectives. Consequently, we encourage our staff, and partners and clients where appropriate, to review their needs and choice of the products and services taking into consideration environmental, social and economical criteria.

Signed



Date

October 2011

To be reviewed

March 2012